



Aesthetic beauty of nature to your personal space



— VENEER CATALOGUE —

INCEPTION

Veneer is that product which is used during the final stages of your ream furniture making, its not only protecting the surface of your furniture, but also keeps your furniture safe and most importantly represents your personality to the world.

Hence, we have dedicated our self to manufacture the best quality product in its category. With Modern and Advanced Manufacturing Unit, the company is equipped with state-of-the-art machineries, top of the line handling systems. Our Biggest Achievement so far is that we have been able to establish our self in the market as one of the most trusted and consistent brand in terms of Quality and Service.

0% Complaint in last 14 years is the reason for the immense faith of our customers in YOU-V Ply Club Products.

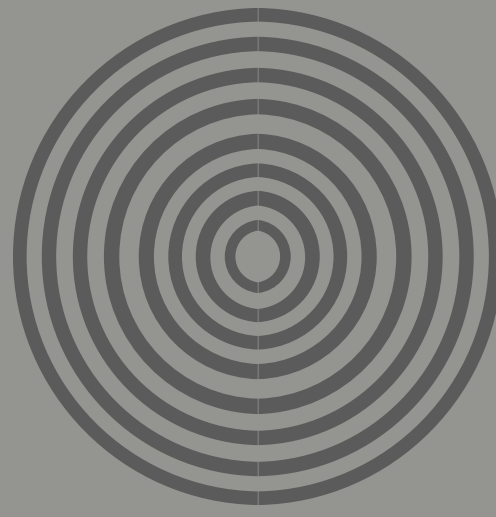
With the primary vision of giving its customers the best quality at reasonable pricing, the company has started its **CoCo** [Company Owned and Company Operated] stores in many cities. This is a B2C model, which is a first in the industry. The consumers are getting company products directly from its store at reasonable prices, while getting genuine products.

Find more at www.youvply.com



SURFACE ARTICULATION
OF FIVE ELEMENTS





SPECIES NAME	PAGE NO.
THE TEXTURES	
AMERICAN WALNUT	08 - 09
OAK	10 - 10
OAK CROWN	11 - 11
DYED OAK	12 - 13
WEATHER OAK	14 - 15
SMOKE OAK	16 - 17
THE WOOD GRAINS	
SANTOSH TREE	20 - 21
WEATHER MIX	22 - 25
THE COLOURS	
SMOKY COLOURS	28 - 29
THE METALLIC	
METALLIC BURL	32 - 33
THE DESIGNER CHOICE	
DESIGNER PANEL	36 - 40
CARE & MAINTENANCE	41 - 41
CUTTING METHODS	42 - 42



*The above species are only selective one and the company has more than 200 species in display at our showrooms.



Textures of your imagination



LIFE TREE



AMERICAN WALNUT



AMERICAN WALNUT HORIZONTAL



ANTIQUÉ OAK



OAK TREE



RED OAK CROWN



SMOKE OAK CROWN HORIZONTAL



DYED OAK CROWN



DYED VINTAGE OAK



DYED VINTAGE OAK DARK



DYED VINTAGE OAK HZ



WEATHER ROSEWOOD D-VINTAGE OAK



WHITE OAK CROWN [10' X 4']



WEATHER WHITE D-VINTAGE OAK



WEATHER WHITE D-VINTAGE OAK HZ



SMOKE OAK QUARTER CUT



SMOKE VINTAGE OAK HORIZONTAL



SMOKE OAK CROWN VR [10' X 4']



A photograph of a forest path with large redwood trees and a wooden fence. The path is paved and curves through a dense forest of tall, slender redwood trees. The ground is covered in green ferns and moss. A wooden fence runs along the path. The lighting is soft and dappled, creating a serene atmosphere.

Trees are the incomprehensible mystery of wood grains



SANTOSH TREE



SANTOSH



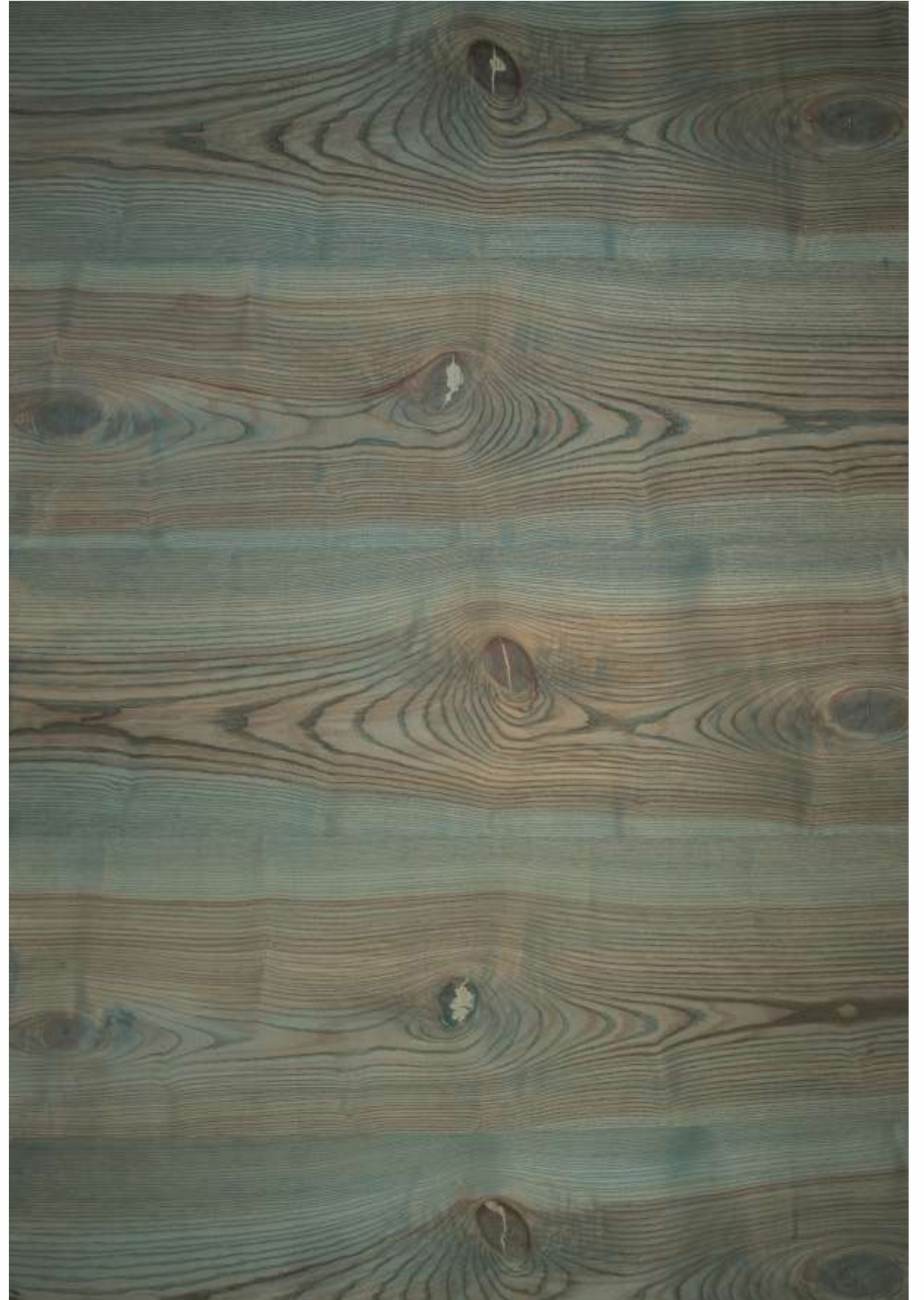
SANTOSH TREE VERTICAL



WEATHER ROSEWOOD SMK CHESNUT VR [10X4]



WEATHER COPPER INK DYED ASH HORIZONTAL



WEATHER GREEN BLUE ASH HZ



WEATHER COPPER SMK VINTAGE CHESHNUT



WEATHER COPPER INK D-ASH HZ





Live in smoky colours



SMOKE EUCLYPTUS



SMOKE LARCH QUARTER



SMOKE RUSTIC HICKORY

SMOKE RUSTIC HICKORY



SMOKE FIGURED EURO WALNUT



SMOKE MANGOLIAN CHESTNUT

The background is a dynamic, abstract composition of numerous wavy, metallic blue lines. These lines flow across the frame, creating a sense of movement and depth. The lines vary in thickness and curvature, giving the impression of a liquid or molten surface. The color is a deep, vibrant blue with subtle gradients and highlights that enhance the metallic texture.

Explore the Metallic World



DYED MAPA BURL



DYED OLIVE ASH BURL HORIZONTAL



METALLIC MAPA BURL



METALLIC MAPA BURL



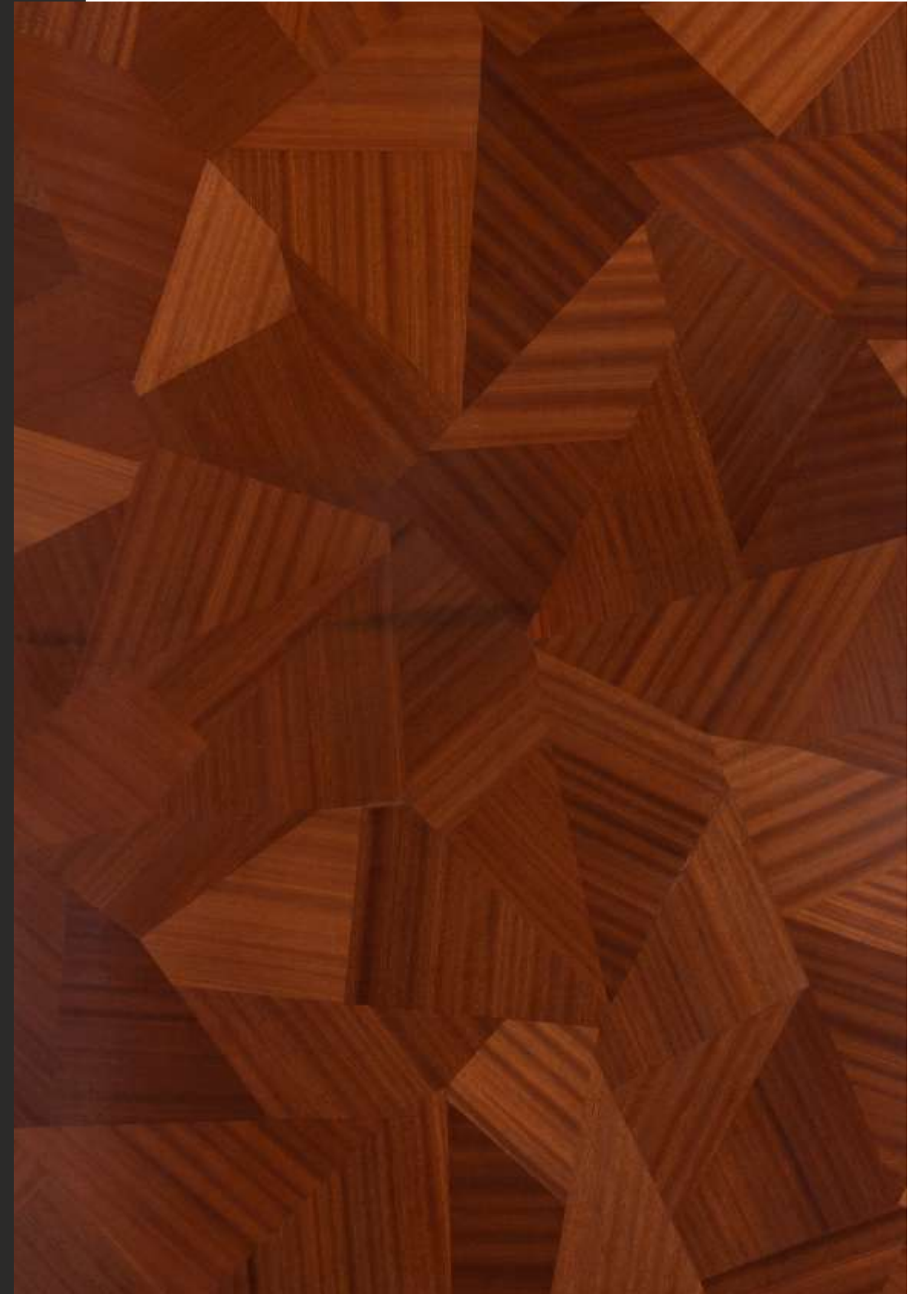
METALLIC MAPA BURL

The background is a complex, low-poly geometric pattern. It consists of numerous triangles of varying sizes and orientations. The color palette is a gradient: deep reds and oranges on the left, transitioning through purples and blues in the center, and ending in bright blues and whites on the right. The triangles are semi-transparent, creating a layered, crystalline effect.

Design that will make You Crazy



ASH CROSS DESIGNER



DESIGNER PANEL



WHITE EBONY



BURMA TEAK



WHITE ASH CROWN VR



ZERICOTE HORIZONTAL

CARE & MAINTENANCE

GENERAL CARE OF VENEERED SURFACES

The on-going care of finished veneered surfaces depends largely on the type and quality of coating applied. In general, veneer surfaces should not be left wet/damp or with wet staining materials on them, such as dark fruit juice/wine. They should not be cleaned with harsh cleaners or chemicals that affect the surface finish. Sharp edges are potential problem zones for breaks or cracks in the coating.

POINTERS TO HELP YOU TAKE CARE OF YOUR VENEERS

Dusting: Use only a soft dry cloth or feather duster.

Polishing: Use a high-quality furniture polish and a soft dry cloth. It is recommended the polish used does not contain any silicone as this may cause re-coating or refurbishment problems at a later date. Abrasive polishes should be avoided.

Extreme Temperature Changes: The expansion or contraction of the timber due to extreme temperature changes may cause damage to the surface coating. Care should be taken in an air-conditioned or heated environment to keep the temperature fluctuations within reasonable limits. Use heat - resistant placemats under hot food and beverages to avoid heat damage.

Spillages: All spillages should be cleaned with a damp cloth as soon as possible. Moisture may cause damage to the coating. High humidity, steam and excessive water contact with the coating may cause the coating to crack. However, if it gets under the coating, it causes white marks on the surface of the veneer. Any chemical substances and alcohol should be removed immediately if spilled on a veneered surface.

Dirty or Greasy Marks: First wipe it clean with a dry cloth, then use a lightly dampened cloth with a mixture of water and a high-quality furniture polish. Persistent dirty or greasy marks may be removed by mild, non-abrasive proprietary cleaners appropriate to the type of surface finish. The appropriateness of the cleaner should be sought from the surface coating or cleaner manufacturer. The effect of the cleaner on the surface should be tested on a hidden or a less conspicuous section on the finished veneer surface.

Direct Sunlight: Direct sunlight should be avoided on all internal veneered surfaces as fading, bleaching or colour changes of the surface coating and of the veneer may occur. Excessive sunshine may dry the veneer surface more quickly than the veneer substrate thereby causing small surface checks parallel to the grain to appear and possibly damage the surface coating.

POLISHING PROCESS

- | | |
|---------|---|
| Stage 1 | Surface cleaning |
| Stage 2 | Sealer application |
| Stage 3 | Smoothing with higher grit sanding paper* |
| Stage 4 | Desired polish application |

Types of Polish

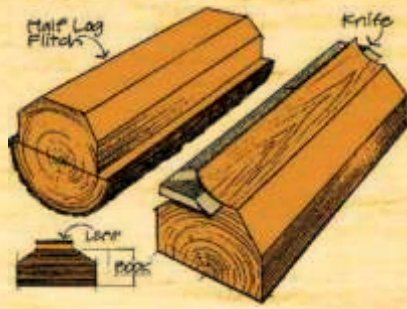
- Lacquer
- Melamine
- Polyurethane (PU)
- Polycoat

*Except in the veneers where specified.



DYED ASH CROWN

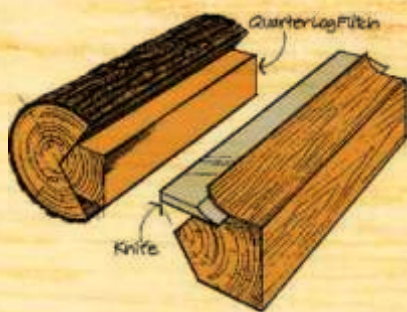
DYED ASH CROWN VR (10' X 4')



FLAT / CROWN CUT: Often referred to colloquially as a 'Flowery Pattern', this design is obtained by slicing the block parallel to the centre of the log. This results in a raised cathedral or flower effect by the innermost growth rings.



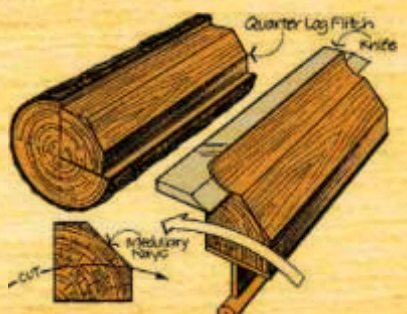
Flat Cut Red Oak



QUARTER CUT: To obtain this design, a log is first cut into four quarter blocks. Then each block is sliced perpendicular to the annual growth rings of the tree. This results in a straight grain appearance on the veneer.



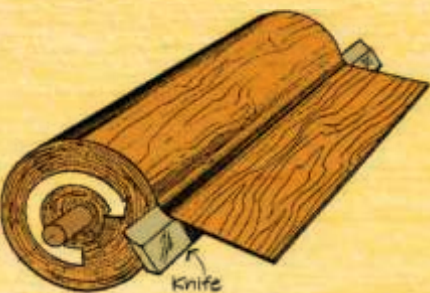
Quarter Cut Red Oak



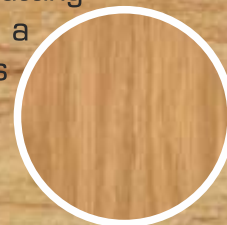
RIFT CUT: This method is generally used with Red Oak and White Oak to minimize the appearance of flakes in the final design. This is derived by slicing the block at a slight angle by cutting slightly against the modular rays. This also results in a straight line design.



Rift Cut Red Oak



ROTARY CUT: For this method of cutting, the log is centred on a lathe and turned against a broad cutting knife set into the log at a slight angle so that a continuous cut is made around the log. This results in a wild, varied design.



Rotary Cut Red Oak

CUTTING METHODS

The types of cut determine the design pattern on the veneer. The size of the log, the wood species, the grain pattern desired and other factors determine which type of cut will be made to create the veneer.





UV PLYLAM PRIVATE LIMITED

Andhra Pradesh / Telangana Branch Office

5-5-57/13/H, 1st Floor, Ghouspura Road, Ghoshamahahal, Near Deccan Engg. College, Hyderabad 500 001

P: +91 40 2474 0152 **E:** sales@youvply.com **W:** WWW.YOUPPLY.COM

West Bengal Manufacturing Unit

NH 6, Mouza Maheshpur, P.O.: Birshibpur, P.S.: Uluberia, Howrah 711 316, West Bengal

UV PLYLAM EXCLUSIVE SHOWROOM

GHOSHAMAHAL | KUKATPALLY | WARANGAL | KARIMNAGAR | NIZAMABAD | VIJAYAWADA | JAGITYAL | PRODDOTUR
KADAPA | KURNOOL | BADVEL | JAMALMADGU | TIRUPATI

